

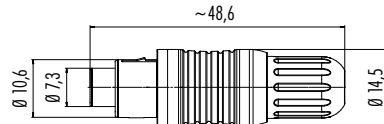


- Push-Pull locking system
- 3 – 8 contacts
- Degree of protection IP40/IP67
- Solder termination
- Diameter 14,5 mm
- Shieldable

Description

Male cable connector, shieldable, IP67

Drawing



Contacts

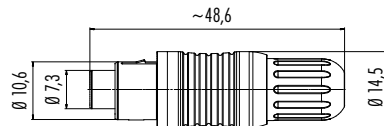
Cable outlet

Ordering-No.

3		99 4905 00 03
4		99 4909 00 04
5	3,5–5 mm	99 4913 00 05
7		99 4925 00 07
8		99 4929 00 08



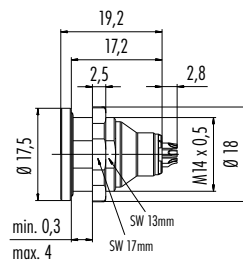
Female cable connector, shieldable, IP67



3		99 4906 00 03
4		99 4910 00 04
5	3,5–5 mm	99 4914 00 05
7		99 4926 00 07
8		99 4930 00 08



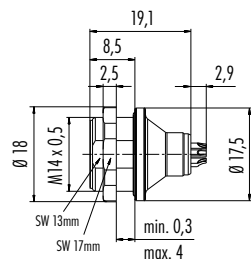
Male panel mount connector, IP40, IP67, shielded, IP67



	IP40	IP67	Shielded, IP67
3	09 4907 025 03	09 4907 015 03	09 4907 00 03
4	09 4911 025 04	09 4911 015 04	09 4911 00 04
5	09 4915 025 05	09 4915 015 05	09 4915 00 05
7	09 4927 025 07	09 4927 015 07	09 4927 00 07
8	09 4931 025 08	09 4931 015 08	09 4931 00 08



Male panel mount connector, front fastened, IP67, shielded, IP67



	IP67	Shielded, IP67
3	09 4907 080 03	09 4907 081 03
4	09 4911 080 04	09 4911 081 04
5	09 4915 080 05	09 4915 081 05
7	09 4927 080 07	09 4927 081 07
8	09 4931 080 08	09 4931 081 08



Specifications

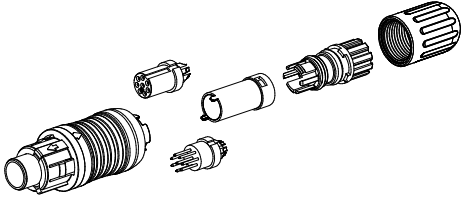
Contacts	3	4	5	7	8
Wire gauge	0,25 mm ² (AWG 24)			0,14 mm ² (AWG 26)	
Mechanical operation	> 500 Mating cycles				
Temperature range	– 40 °C / + 85 °C				
Rated voltage	125 V				
Pollution degree	2				
Rated current (40°C)	4 A	3 A		1 A	
Contact plating	Au (Gold)				
Material of housing	PA				

Description	Drawing	Contacts	IP40	IP67	Shielded, IP67
Female panel mount connector, IP40, IP67, shielded, IP67		3	09 4908 025 03	09 4908 015 03	09 4908 00 03
		4	09 4912 025 04	09 4912 015 04	09 4912 00 04
		5	09 4916 025 05	09 4916 015 05	09 4916 00 05
		7	09 4928 025 07	09 4928 015 07	09 4928 00 07
		8	09 4932 025 08	09 4932 015 08	09 4932 00 08

Description	Drawing	IP67	Shielded, IP67	
Female panel mount connector, front fastened, IP67, shielded, IP67		3	09 4908 080 03	09 4908 081 03
		4	09 4912 080 04	09 4912 081 04
		5	09 4916 080 05	09 4916 081 05
		7	09 4928 080 07	09 4928 081 07
		8	09 4932 080 08	09 4932 081 08

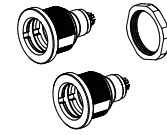
Component part drawing

Cable connectors



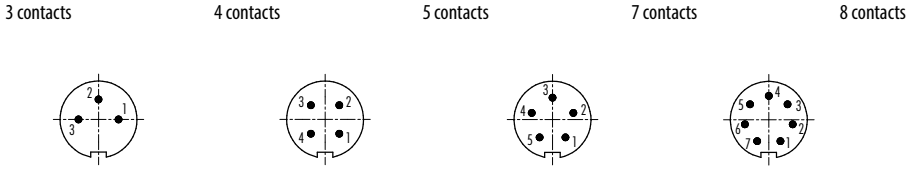
- Locking device
- Female insert
- Male insert
- Distance sleeve
- Clamping device
- Seal
- Pressing screw

Panel mount connectors

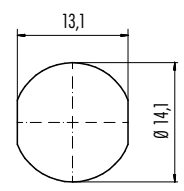


- Panel mount connector housing
- Female insert
- Male insert
- Hexagonal nut

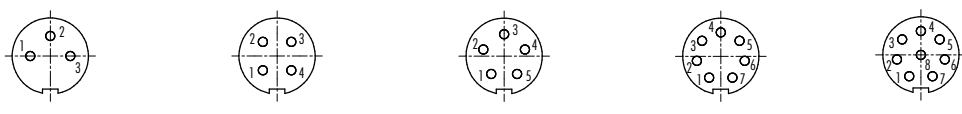
Contact arrangements male insert (mating side)



Panel cut out



Contact arrangements female insert (mating side)



Description	Drawing	Ordering-No.
Protection cap for male cable connector		08 2965 000 000



Protection cap for female cable connector		08 2966 000 000
-------------------------------------------	--	-----------------

