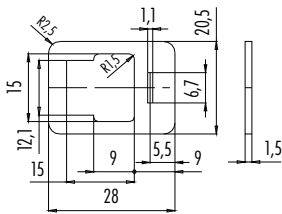


Flachdichtung, Industrie
Flat seal, industrial standard

Abbildung / Figure



Maßzeichnung / Drawing

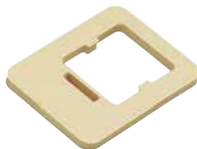


Bestell-Daten / Order Data

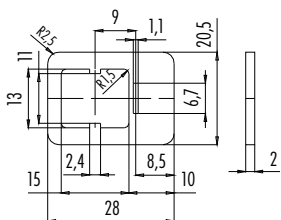
| Material Material | Farbe Colour | Bestell-Nr. Ordering-No. | Temperaturbereich Temperature range |
|----------------------|-----------------|-----------------------------|--|
| NBR | beige/beige | 16 8093 000 | -40 °C /+ 100°C |
| Silicon | rot/red | 16 8093 001 | -60 °C /+ 250°C |

Flachdichtung, DIN
Flat seal, DIN

Abbildung / Figure



Maßzeichnung / Drawing



Bestell-Daten / Order Data

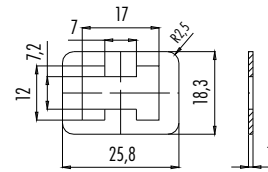
| Material Material | Farbe Colour | Bestell-Nr. Ordering-No. | Temperaturbereich Temperature range |
|----------------------|-----------------|-----------------------------|--|
| NBR | beige/beige | 16 8100 000 | -40 °C /+ 100°C |
| Silicon | rot/red | 16 8100 001 | -60 °C /+ 250°C |

Flachdichtung, Industrie
Flat seal, industrial standard

Abbildung / Figure



Maßzeichnung / Drawing



Bestell-Daten / Order Data

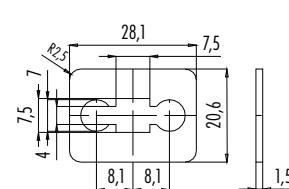
| Material Material | Farbe Colour | Bestell-Nr. Ordering-No. | Temperaturbereich Temperature range |
|----------------------|-----------------|-----------------------------|--|
| NBR | beige/beige | 16 8094 000 | -40 °C /+ 100°C |
| Silicon | rot/red | 16 8094 001 | -60 °C /+ 250°C |

Flachdichtung, DIN
Flat seal, DIN

Abbildung / Figure



Maßzeichnung / Drawing



Bestell-Daten / Order Data

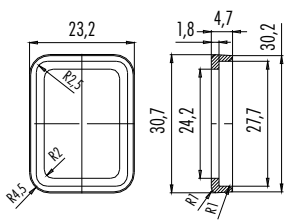
| Material Material | Farbe Colour | Bestell-Nr. Ordering-No. | Temperaturbereich Temperature range |
|----------------------|-----------------|-----------------------------|--|
| NBR | beige/beige | 16 8101 000 | -40 °C /+ 100°C |

Profildichtung, Industrie/DIN
Profiled seal, industrial standard/DIN

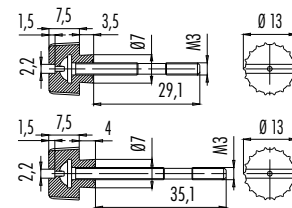
Abbildung / Figure



Maßzeichnung / Drawing



Rändelschraube
Knurled screw



Bestell-Daten / Order Data

| Material | Farbe | Bestell-Nr. | Temperaturbereich |
|----------|---------------|--------------|-------------------|
| Material | Colour | Ordering-No. | Temperature range |
| NBR | schwarz/black | 16 8105 000 | - 20 °C /+ 130°C |

| Länge | Bestell-Nr. |
|---------|--------------|
| Length | Ordering-No. |
| 29,1 mm | 16 8096 131 |
| 35,1 mm | 16 8104 131 |