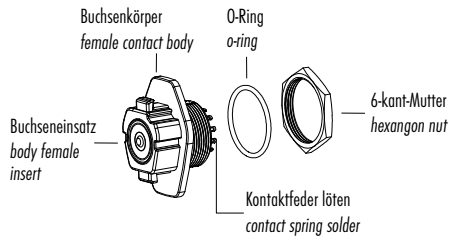


Einzelteildarstellung Component part drawing

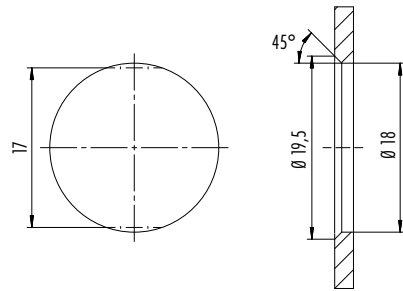
Flanschdose
Female panel mount connector



Montageausschnitt Panel cut out

Alternative mit Fläche
Alternative with flats

Montagewand
Mounting wall

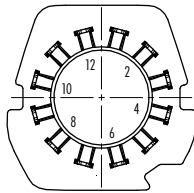


Polbilder Contact arrangements

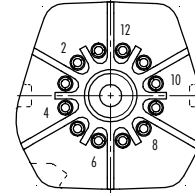
Stifteinsatz (Anschlussseite) Male insert (termination side)

Buchseinsatz (Anschlussseite) Female insert (termination side)

12 pol
12 contacts



	X	Y
1	1,59	5,94
2	4,35	4,35
3	5,94	1,59
4	5,94	-1,59
5	4,35	-4,35
6	1,59	-5,94
7	-1,59	-5,94
8	-4,35	-4,35
9	-5,94	-1,59
10	-5,94	1,59
11	-4,35	4,35
12	-1,59	5,94



	X	Y
1	-1,09	4,06
2	-2,97	2,97
3	-4,06	1,09
4	-4,06	-1,09
5	-2,97	-2,97
6	-1,09	-4,06
7	1,09	-4,06
8	2,97	-2,97
9	4,06	-1,09
10	4,06	1,09
11	2,97	2,97
12	1,09	4,06

Zubehör Serie 570

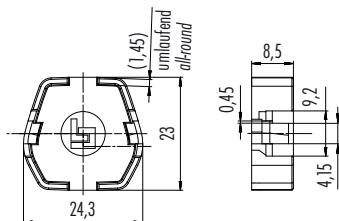
Accessories 570 Series

Lösewerkzeug für Kabelstecker Extraction tool for male cable connector

Abbildung / Figure



Maßzeichnung / Drawing



Bestell-Daten / Order Data

Bestell-Nr.
Ordering-No.

07 0003 000